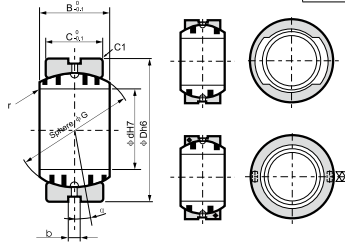


RCB-JDBS 自润球铰 Oilless Guide Bushes



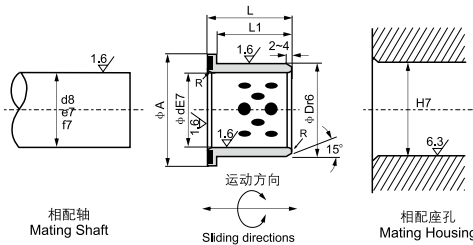
Inner ring	Material	CuZn25Al6Mn4+Gr
Outering	material	S45C
	Hardness	HRC25~30

Method of installing Inner ring:
 Type A: JDBS-015~090
 Insertion with horizontal direction
 Type B: JDBS-100
 Insertion by splitting
 Recommend shaft & housing:
 Housing: H7
 Shaft: g6
 For common use

单位unit:mm

Stanard No. 规格	Dimension							Aligning angle 调整角度 σ°	Type
	φd	φD	B	C	φG	r	b		
JDBS-015	15	26	12	9	22	R0.5	4	8	
JDBS-020	20	32	16	14	28			4	
JDBS-025	25	42	21	18	36			5	
JDBS-030	30	50	27	23	44			6	
JDBS-035	35	55	30	26	49			5	
JDBS-040	40	62	33	28	55	R1	4	6	A
JDBS-050	50	80	42	36	70			5	
JDBS-060	60	100	53	45	90			6	
JDBS-070	70	110	58	50	99			5	
JDBS-080	80	130	70	60	115			6	
JDBS-090	90	140	76	65	125			6	
JDBS-100	100	160	88	75	145			6	B

RCB-JDBB 自润翻边轴套 Oilless Flange Bushes



材质	高力黄铜 + 石墨
Material	CuZn25Al6Mn4+ Graphite

单位unit:mm

Stanard No. 规格	φd	E7	φD	r6	φA	L1	L
JDBB-12×15	12	+0.050	18	+0.034	25	11	15
JDBB-16×20	16	+0.032	22	+0.023	30	15	20
JDBB-20×25	20	+0.061	28	+0.041	36	20	25
JDBB-25×30	25	+0.040	33	+0.028	43	25	30
JDBB-30×35	30	+0.050	38	+0.034	48	30	35
JDBB-40×45	40	+0.075	50	+0.050	60	40	45
JDBB-50×55	50	+0.050	62	+0.041	75	49	55
JDBB-60×65	60	+0.090	75	+0.062	90	58	65
		+0.060		+0.043			